

Report
on the results of the questionnaire
“Satisfaction of master's students with educational services”
for the 2023-2024 academic year
on the educational programme
7M07301 Geodesy

In February 2024, the Center for Quality Management and Accreditation conducted an anonymous electronic questionnaire **“Satisfaction of master's students with educational services”**.

The purpose of the study is to measure customer satisfaction with the quality of services provided by the university.

Subject of the study: formed perceptions of undergraduates about the organisation of the educational process, the degree of satisfaction with its various characteristics.

The results of the questionnaire were processed and presented in a summarised form with the guarantee of confidentiality of the personal opinions of master's students.

The object of the study is master's students of 1-2 years.

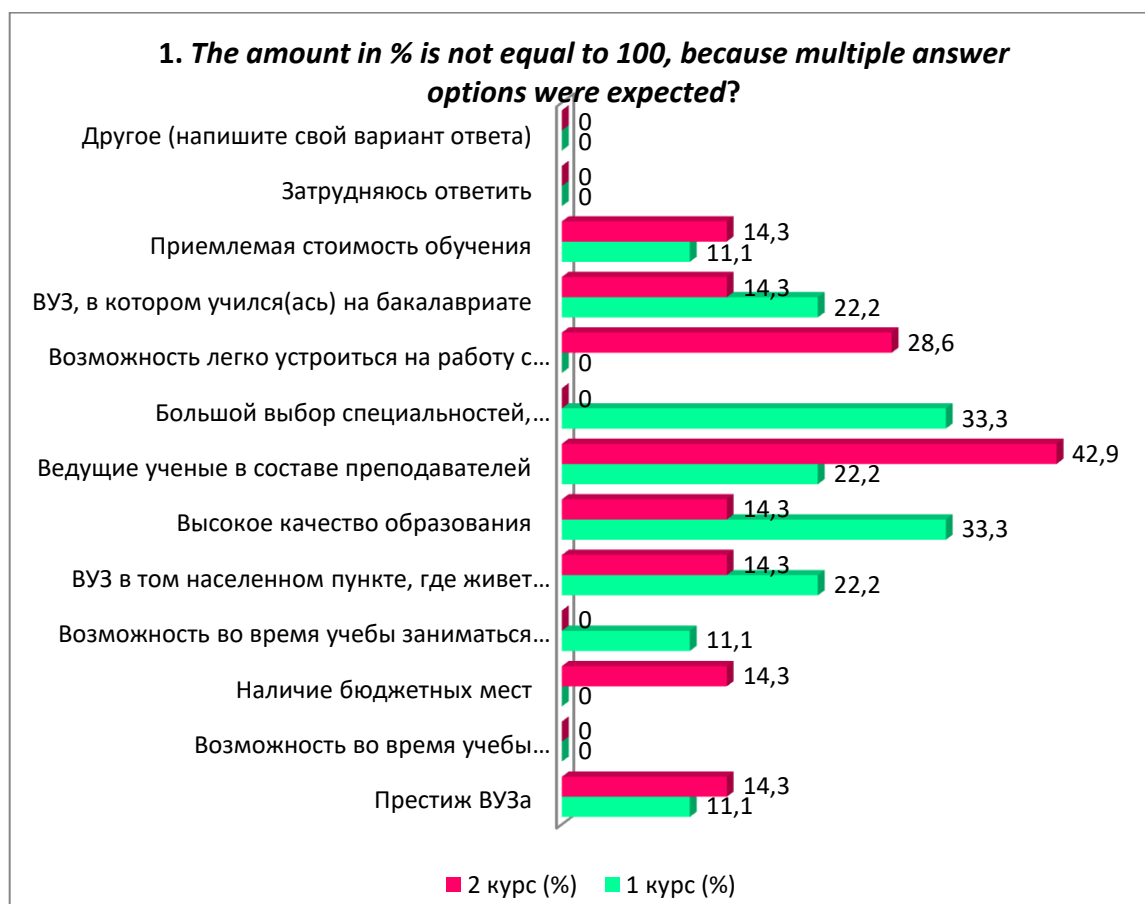
16 respondents took part in the questionnaire, which was 72,7% of the total number of master's students.

In the process of questionnaire survey the following data were obtained:

1. What determined your choice of studying at a university master’s program? (choose 3-4 answer options)

| Answer options | 1st year (%) | 2nd year (%) |
|---|---------------------|---------------------|
| University prestige | 11,1 | 14,3 |
| Possibility of internships abroad during studies | - | - |
| Availability of budgetary places | - | 14,3 |
| Opportunity to do science during studies | 11,1 | - |
| University in the locality where the family lives (close to it) | 22,2 | 14,3 |
| High quality of education | 33,3 | 14,3 |
| Leading scientists in the teaching staff | 22,2 | 42,9 |
| Large choice of specialities, areas of education | 33,3 | - |
| Ability to easily find a job with a diploma from this university. | - | 28,6 |
| The university where you studied at the bachelor's programme. | 22,2 | 14,3 |
| Acceptable cost of education | 11,1 | 14,3 |
| Difficult to answer | - | - |
| Other (write your answer) | - | - |

** The amount in % is not equal to 100, because multiple answer options were expected*



2. How satisfied are you with the availability of information provided by the university in your field of study:

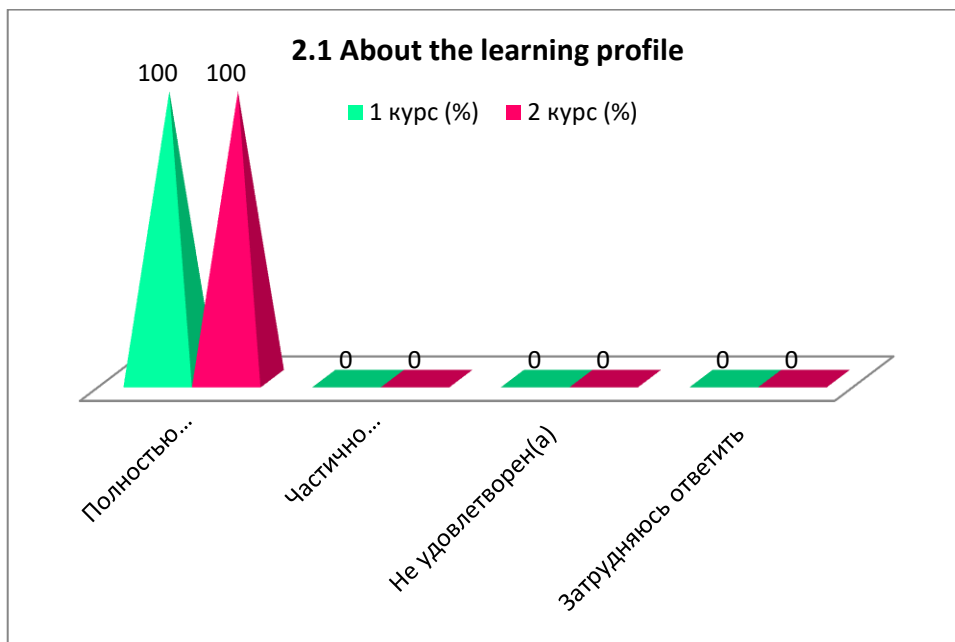
| |
|--|
| 2.1 О профиле обучения |
| 2.2 Характеристика профессиональной деятельности магистранта |
| 2.3 Перечень формируемых компетенций выпускника магистратуры |
| 2.4 Перечень баз практик магистрантов |
| 2.5 Сведения о научных руководителях |

Other (write your answer) _____

If you answered “Not satisfied” to the previous question, give recommendations for improving the area of training _____

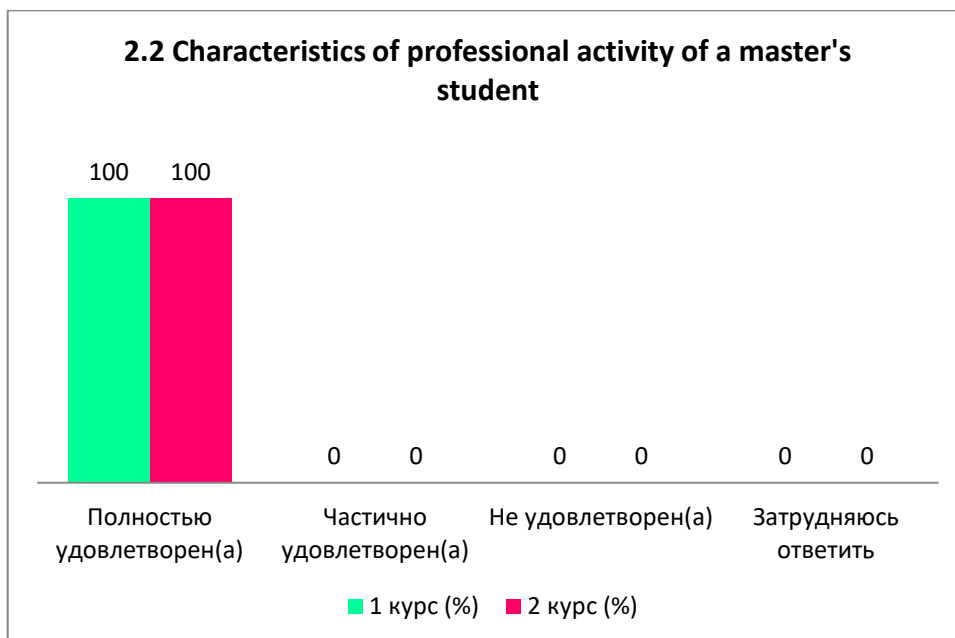
2.1 About the learning profile

| Answer options | 1st year (%) | 2nd year (%) |
|-------------------------------|--------------|--------------|
| Completely satisfied | 100 | 100 |
| Partially satisfied | - | - |
| Not satisfied | - | - |
| I find it difficult to answer | - | - |



2.2 Characteristics of professional activity of a master's student

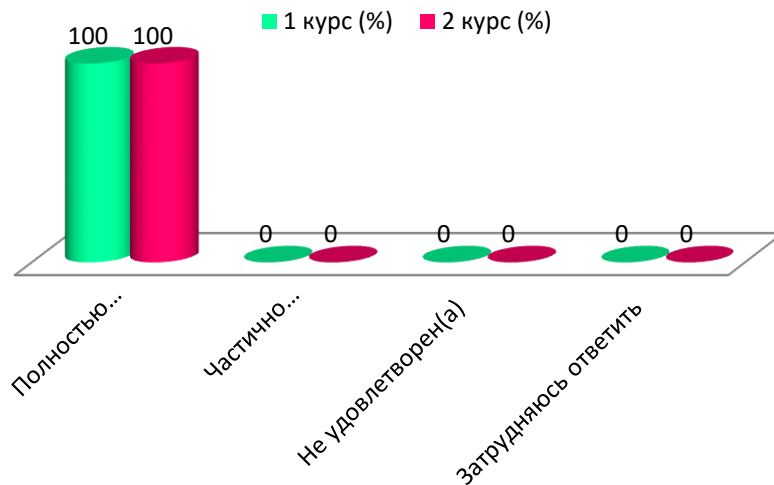
| Answer options | 1st year (%) | 2nd year (%) |
|-------------------------------|--------------|--------------|
| Completely satisfied | 100 | 100 |
| Partially satisfied | - | - |
| Not satisfied | - | - |
| I find it difficult to answer | - | - |



2.3 List of developed competencies of master's degree graduates

| Answer options | 1st year (%) | 2nd year (%) |
|-------------------------------|--------------|--------------|
| Completely satisfied | 100 | 100 |
| Partially satisfied | - | - |
| Not satisfied | - | - |
| I find it difficult to answer | - | - |

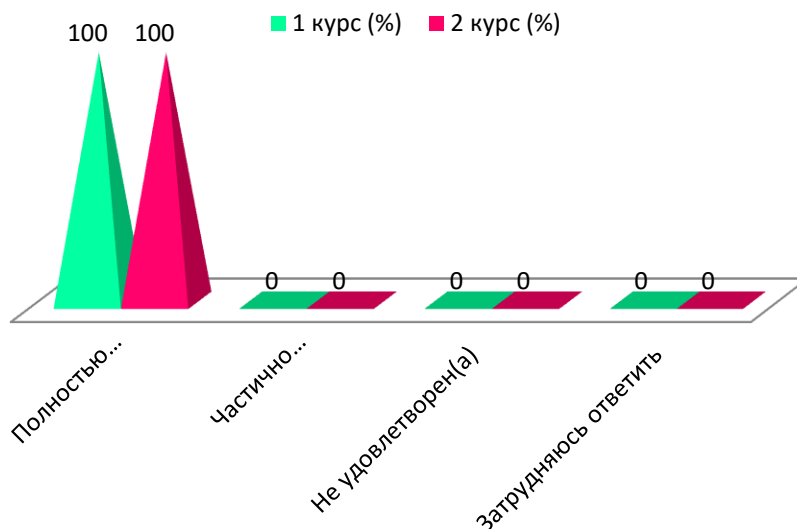
2.3 List of developed competencies of master's degree graduates



2.4 List of practice bases for master's students

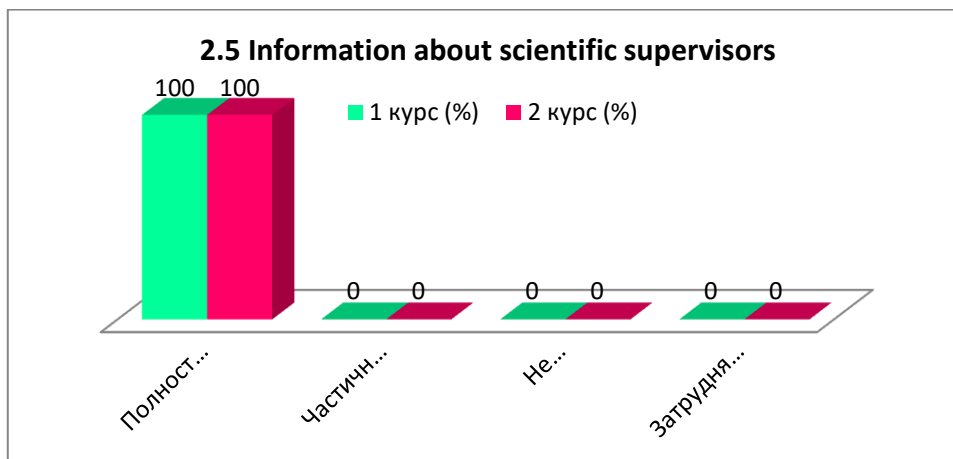
| Answer options | 1st year (%) | 2nd year (%) |
|-------------------------------|--------------|--------------|
| Completely satisfied | 100 | 100 |
| Partially satisfied | - | - |
| Not satisfied | - | - |
| I find it difficult to answer | - | - |

2.4 List of practice bases for master's students



2.5 Information about scientific supervisors

| Answer options | 1st year (%) | 2nd year (%) |
|-------------------------------|--------------|--------------|
| Completely satisfied | 100 | 100 |
| Partially satisfied | - | - |
| Not satisfied | - | - |
| I find it difficult to answer | - | - |



3. How would you generally assess the teaching staff of your Master's programme?

| |
|---|
| 3.1 Knowledge, qualifications |
| 3.2 Pedagogical qualities |
| 3.3 Objectivity and impartiality of assessments |
| 3.4 Teaching methods used |

Other (write your answer) _____

If you answered “Low” to the previous question, give recommendations for improving the teaching staff _____

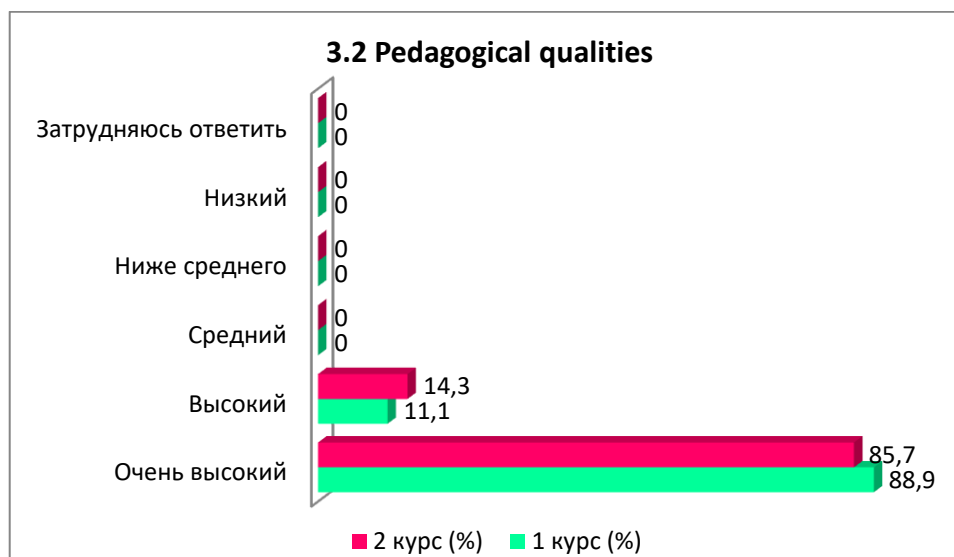
3.1 Knowledge, qualifications

| Answer options | 1st year (%) | 2nd year (%) |
|---------------------|--------------|--------------|
| Very high | 88,9 | 71,4 |
| High | 11,1 | 28,6 |
| Average | - | - |
| Below average | - | - |
| Low | - | - |
| Difficult to answer | - | - |



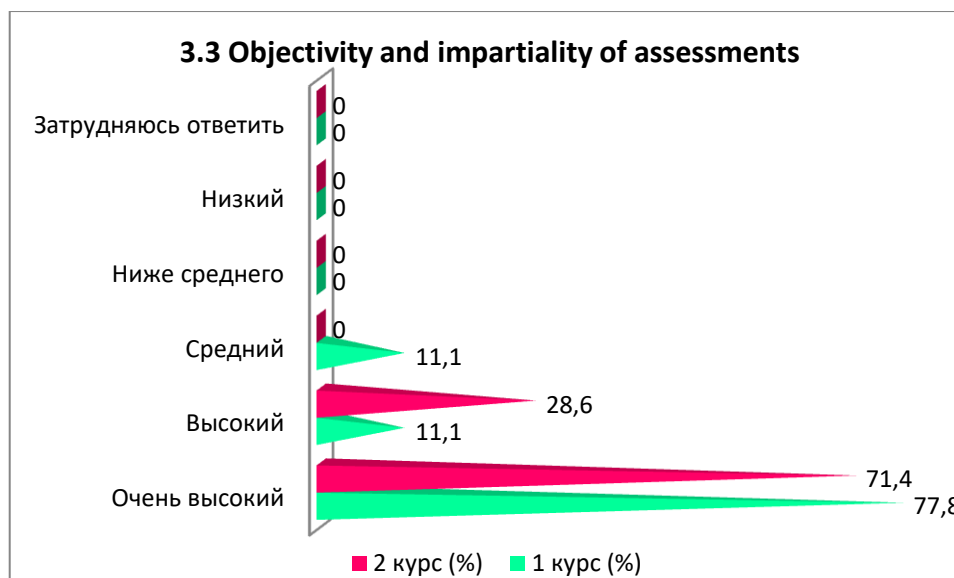
3.2 Pedagogical qualities

| Answer options | 1st year (%) | 2nd year (%) |
|---------------------|--------------|--------------|
| Very high | 88,9 | 85,7 |
| High | 11,1 | 14,3 |
| Average | - | - |
| Below average | - | - |
| Low | - | - |
| Difficult to answer | - | - |



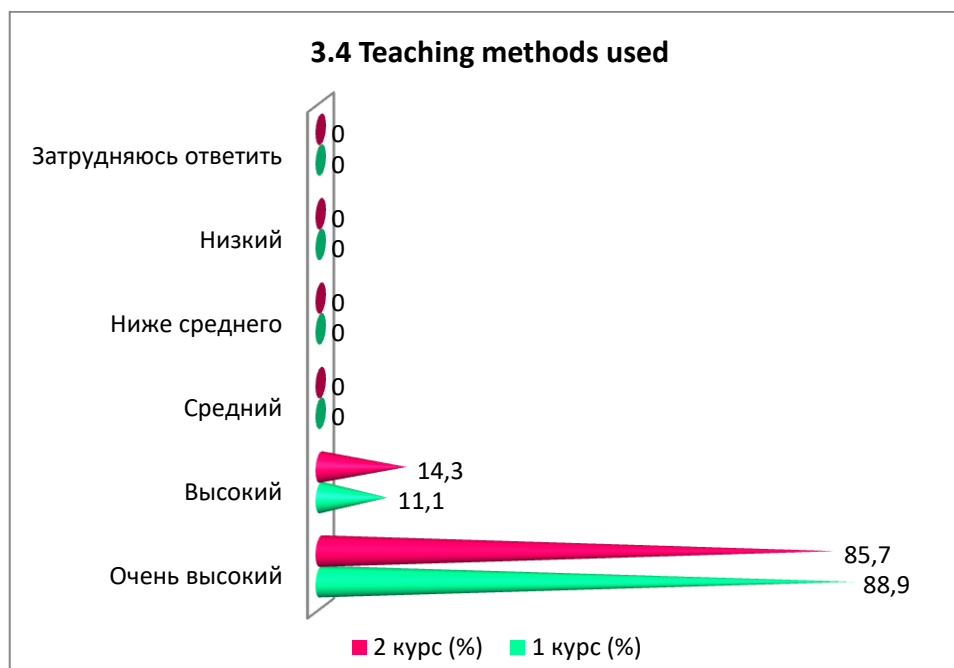
3.3 Objectivity and impartiality of assessments

| Answer options | 1st year (%) | 2nd year (%) |
|---------------------|--------------|--------------|
| Very high | 77,8 | 71,4 |
| High | 11,1 | 28,6 |
| Average | 11,1 | - |
| Below average | - | - |
| Low | - | - |
| Difficult to answer | - | - |



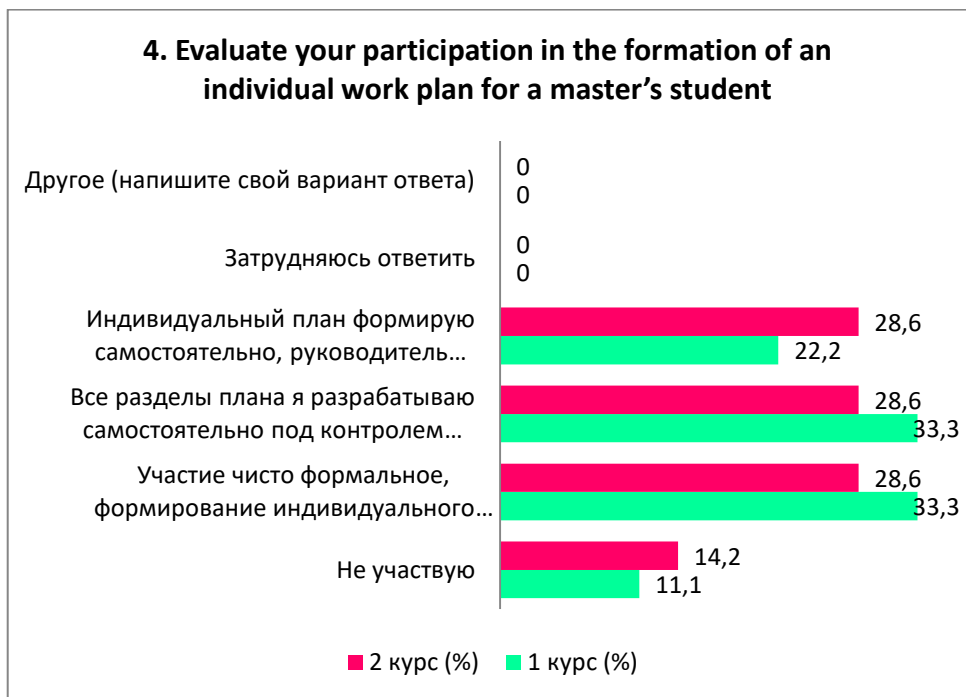
3.4 Teaching methods used

| Answer options | 1st year (%) | 2nd year (%) |
|---------------------|--------------|--------------|
| Very high | 88,9 | 85,7 |
| High | 11,1 | 14,3 |
| Average | - | - |
| Below average | - | - |
| Low | - | - |
| Difficult to answer | - | - |



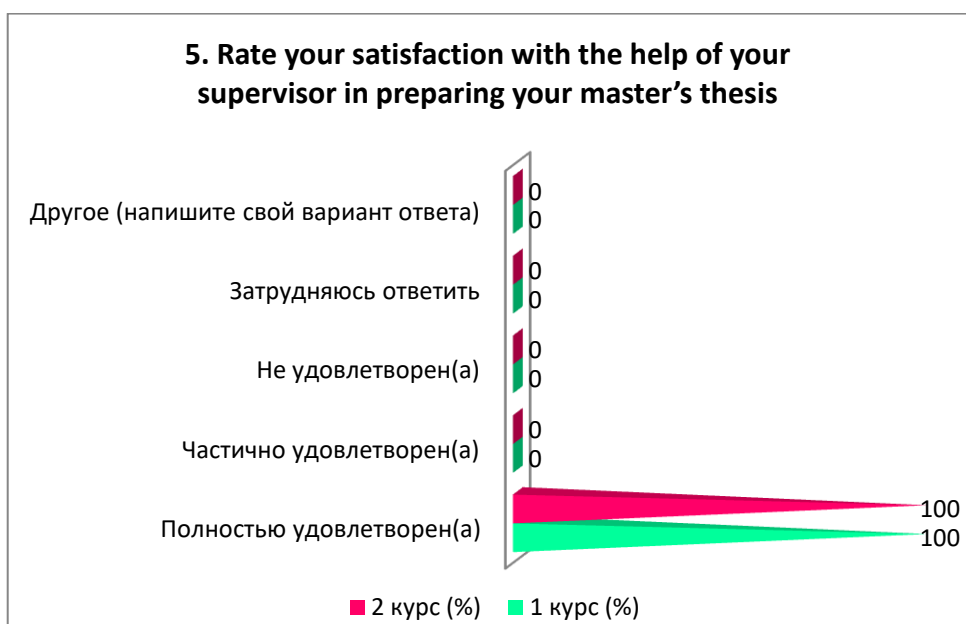
4. Evaluate your participation in the formation of an individual work plan for a master's student

| Answer options | 1st year (%) | 2nd year (%) |
|--|--------------|--------------|
| I don't participate | 11,1 | 14,2 |
| Participation is purely formal; the formation of an individual plan actually does not depend on me | 33,3 | 28,6 |
| I develop all sections of the plan independently under the supervision of my supervisor. | 33,3 | 28,6 |
| I formulate an individual plan myself; the manager only signs it. | 22,2 | 28,6 |
| I find it difficult to answer | - | - |
| Other (write your answer) | - | - |



5. Rate your satisfaction with the help of your supervisor in preparing your master's thesis

| Answer options | 1st year (%) | 2nd year (%) |
|-------------------------------|--------------|--------------|
| Completely satisfied | 100 | 100 |
| Partially satisfied | - | - |
| Not satisfied) | - | - |
| I find it difficult to answer | - | - |
| Other (write your answer) | - | - |

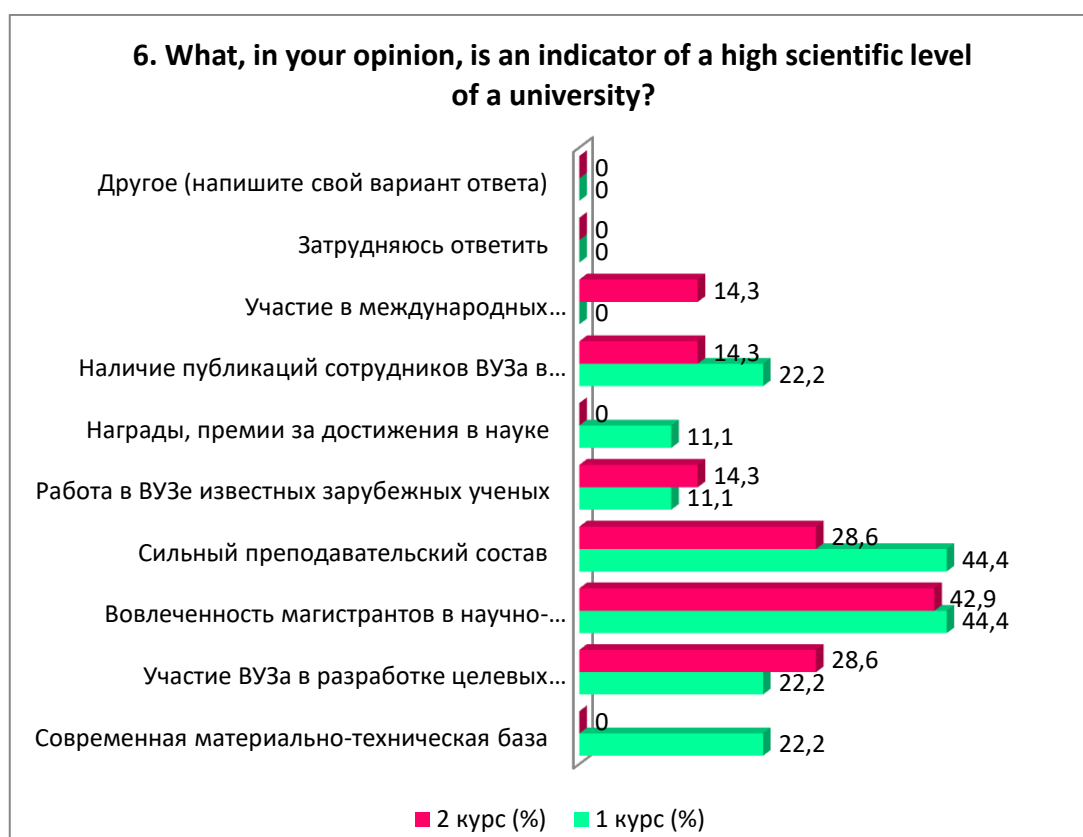


6. What, in your opinion, is an indicator of a high scientific level of a university? (select 3-4 key characteristics)

| Answer options | 1st year (%) | 2nd year (%) |
|------------------------------------|--------------|--------------|
| Modern material and technical base | 22,2 | - |

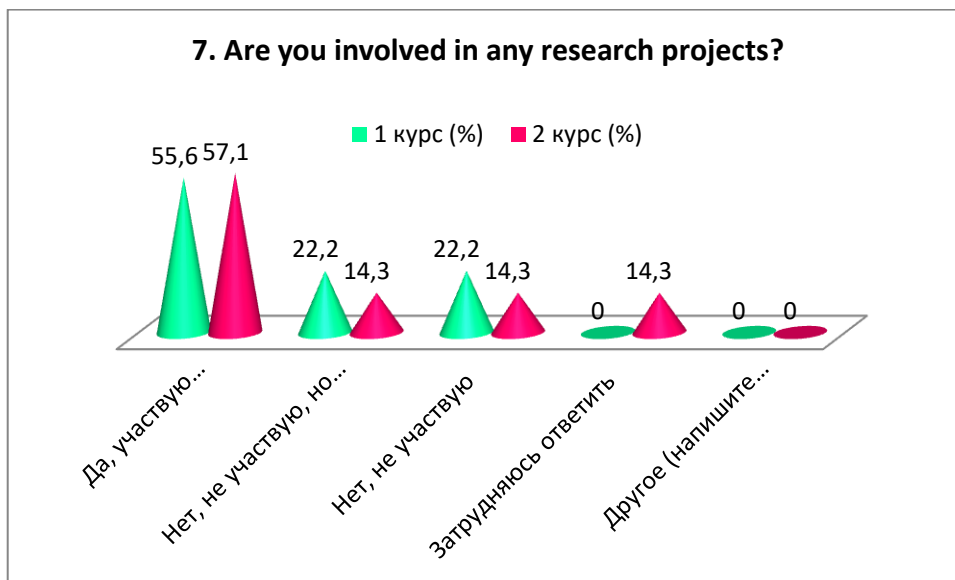
| | | |
|---|------|------|
| Participation of the university in the development of targeted programs for the socio-economic development of the region, cities, and enterprises | 22,2 | 28,6 |
| Involvement of undergraduates in research projects | 44,4 | 42,9 |
| Strong teaching staff | 44,4 | 28,6 |
| Work at the university of famous foreign scientists | 11,1 | 14,3 |
| Awards, prizes for achievements in science | 11,1 | - |
| Availability of publications by university staff in international publications | 22,2 | 14,3 |
| Participation in international research projects | - | 14,3 |
| I find it difficult to answer | - | - |
| Other (write your answer) | - | - |

* The amount in % is not equal to 100, because multiple answer options were expected



7. Are you involved in any research projects?

| Answer options | 1st year (%) | 2nd year (%) |
|---|--------------|--------------|
| Yes, I participate (go to question 8) | 55,6 | 57,1 |
| No, I don't participate, but I attend scientific events (seminars, conferences) at the university | 22,2 | 14,3 |
| No, I'm not participating | 22,2 | 14,3 |
| I find it difficult to answer | - | 14,3 |
| Other (write your answer) | - | - |



8. Please indicate which research projects you are involved in (select all that apply)

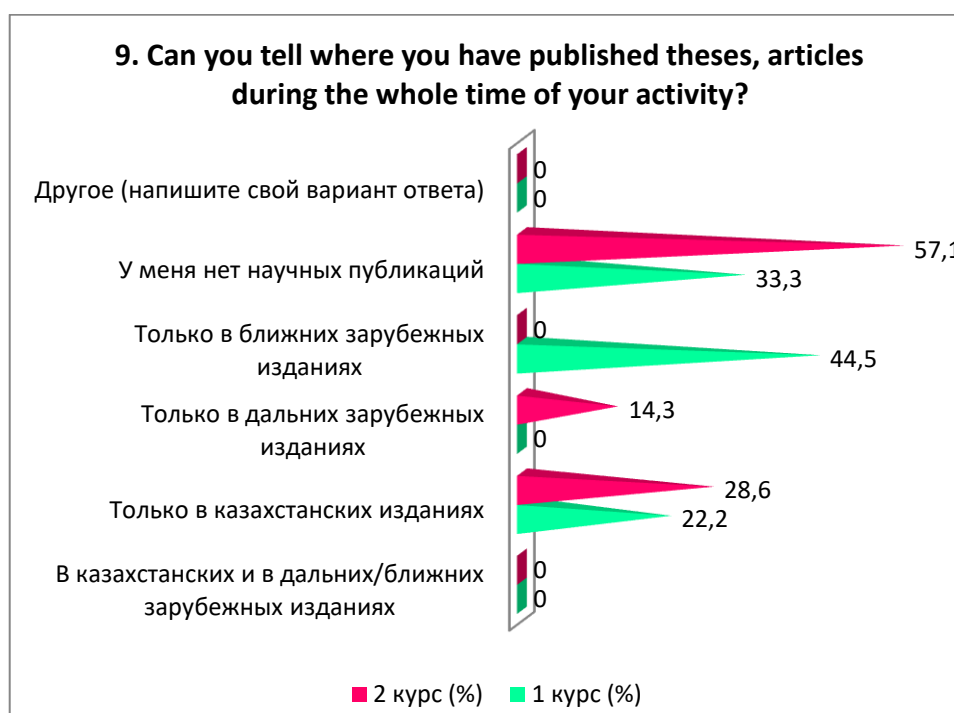
| Answer options | 1st year (%) | 2nd year (%) |
|--|--------------|--------------|
| I participate in the activities of scientific departments at my university | 22,2 | - |
| I am participating in a project led by my supervisor/other teacher | 22,2 | 28,6 |
| Working on a research project with friends | 22,2 | 28,6 |
| I am participating in a research project at another university | - | - |
| I am participating in a research project with foreign universities | 11,1 | - |
| I find it difficult to answer | 11,1 | - |
| Other (write your answer) | - | - |

Note: question 8 was answered only by those students who answered positively to question 7. Also, question 8 had more than one answer choice, so the sum of the answers does not add up to 100%.



9. Can you tell where you have published theses, articles during the whole time of your activity?

| Answer options | 1st year (%) | 2nd year (%) |
|--|--------------|--------------|
| In Kazakhstan and in distant/near foreign publications | - | - |
| Only in Kazakhstan publications | 22,2 | 28,6 |
| Only in distant foreign publications | - | 14,3 |
| Only in nearby foreign publications | 44,5 | - |
| I have no scientific publications | 33,3 | 57,1 |
| Other (write your answer) | - | - |



If you answered ‘**I have no scientific publications**’ to the previous question, write why*:

- - I am just beginning my scientific activity.

10. Your level of foreign language skills:

| Answer options | 1st year (%) | 2nd year (%) |
|----------------------------------|--------------|--------------|
| With dictionary | 11,1 | - |
| Speaking level | 22,2 | 57,1 |
| Average level | 44,5 | 14,3 |
| I express myself freely | 22,2 | 28,6 |
| I don't speak a foreign language | - | - |
| Other (write your answer) | - | - |

* The students' answers are presented in the original. Orthography and punctuation of the author are preserved.



11. Rate your level of participation in the following activities of the department

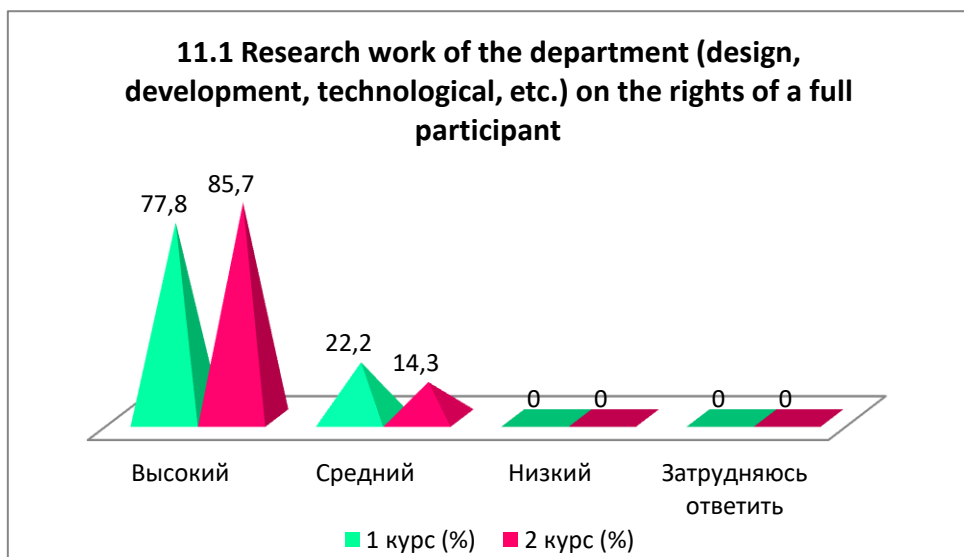
| |
|---|
| 11.1 Research work of the department (design, development, technological, etc.) on the rights of a full participant |
| 11.2 Writing scientific articles |
| 11.3 Participation in presentations at conferences and seminars |
| 11.4 Preparation of research reports and abstracts |

Other (write your answer) _____

If you answered “Low” to the previous question, give recommendations for improving the participation of undergraduates in the work of the department _____

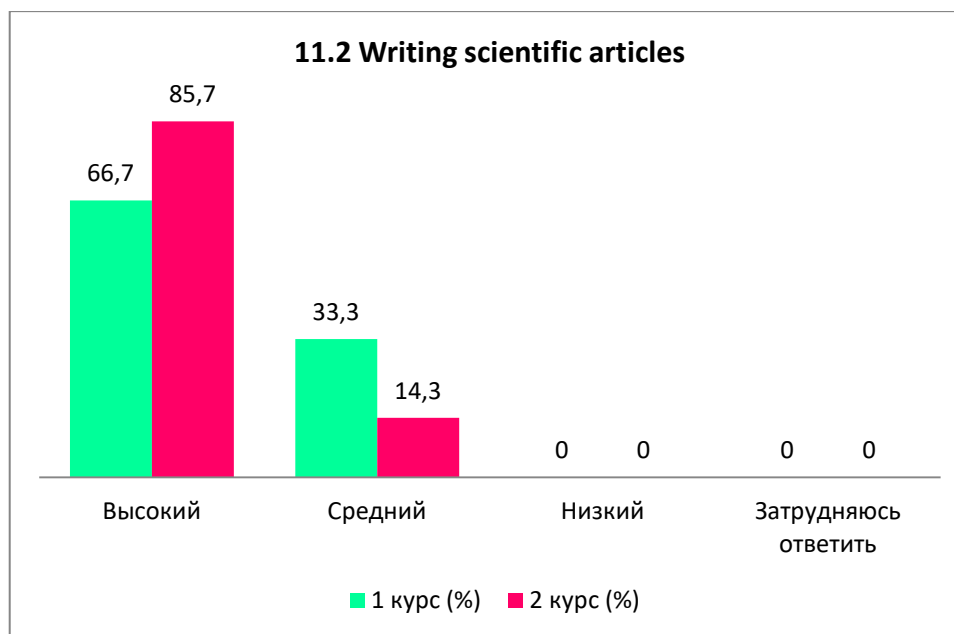
11.1 Research work of the department (design, development, technological, etc.) on the rights of a full participant

| Answer options | 1st year (%) | 2nd year (%) |
|-------------------------------|--------------|--------------|
| High | 77,8 | 85,7 |
| Average | 22,2 | 14,3 |
| Short | - | - |
| I find it difficult to answer | - | - |



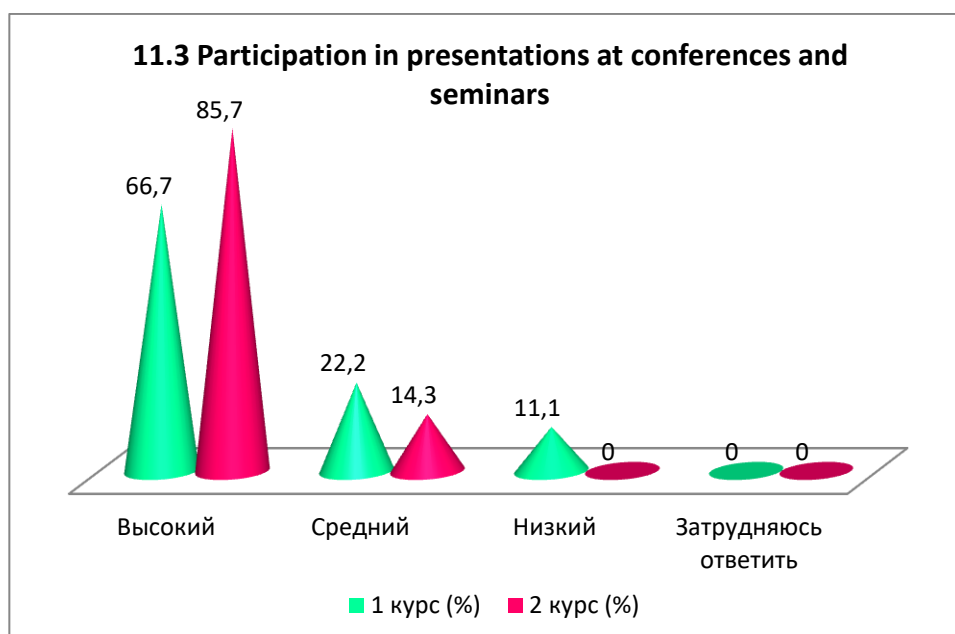
11.2 Writing scientific articles

| Answer options | 1st year (%) | 2nd year (%) |
|-------------------------------|--------------|--------------|
| High | 66,7 | 85,7 |
| Average | 33,3 | 14,3 |
| Short | - | - |
| I find it difficult to answer | - | - |



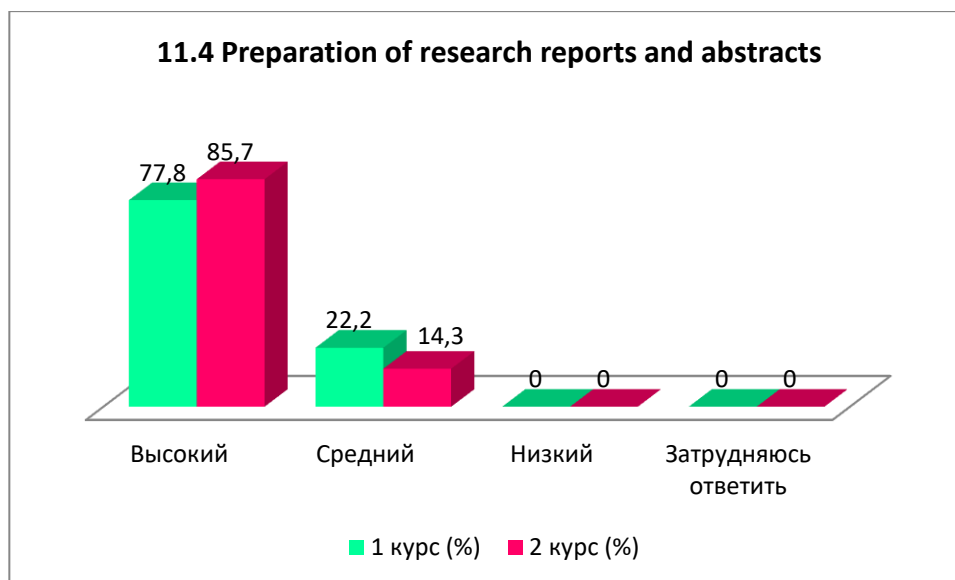
11.3 Participation in presentations at conferences and seminars

| Answer options | 1st year (%) | 2nd year (%) |
|-------------------------------|--------------|--------------|
| High | 66,7 | 85,7 |
| Average | 22,2 | 14,3 |
| Short | 11,1 | - |
| I find it difficult to answer | - | - |



11.4 Preparation of research reports and abstracts

| Answer options | 1st year (%) | 2nd year (%) |
|-------------------------------|--------------|--------------|
| High | 77,8 | 85,7 |
| Average | 22,2 | 14,3 |
| Short | - | - |
| I find it difficult to answer | - | - |



12. Are you satisfied with the scientific and educational environment of the university during your master's studies?

| |
|--|
| 12.1 Organization of conferences, round tables, forums at the university with the participation of master students |
| 12.2 Material and technical support for applied scientific research |
| 12.3 Availability for master students of technology, computers necessary for the educational process and scientific activities |
| 12.4 General level of organization and conduct of foreign internships |
| 12.5 Availability of library collections, electronic databases and Internet resources |
| 12.6 Availability of scientific equipment, instruments, materials |
| 12.7 Availability of laboratories, specialized facilities and experimental sites |

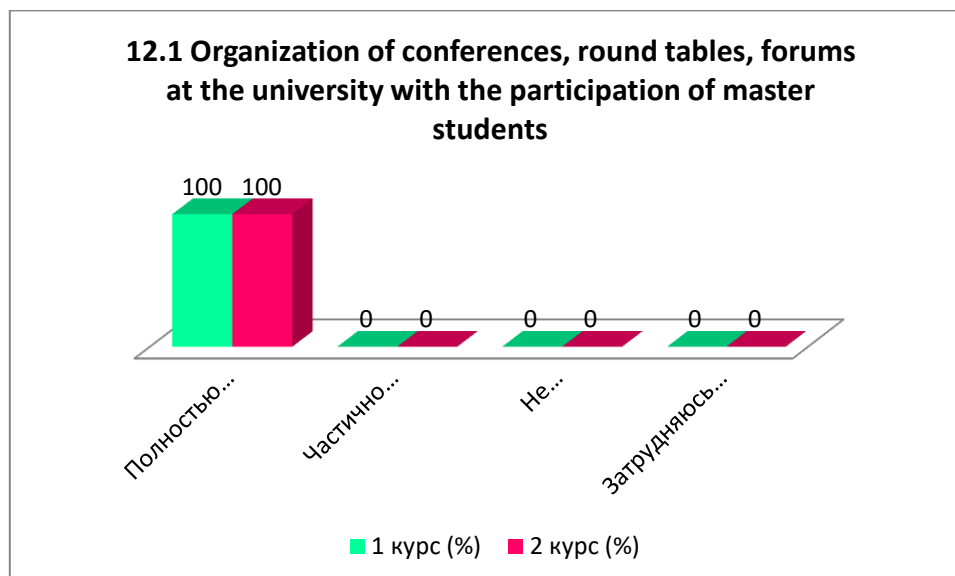
Other (write your answer) _____

If you answered "Not satisfied" to the previous question, give recommendations for improving the scientific and educational environment of the university

12.1 Organization of conferences, round tables, forums at the university with the participation of master students

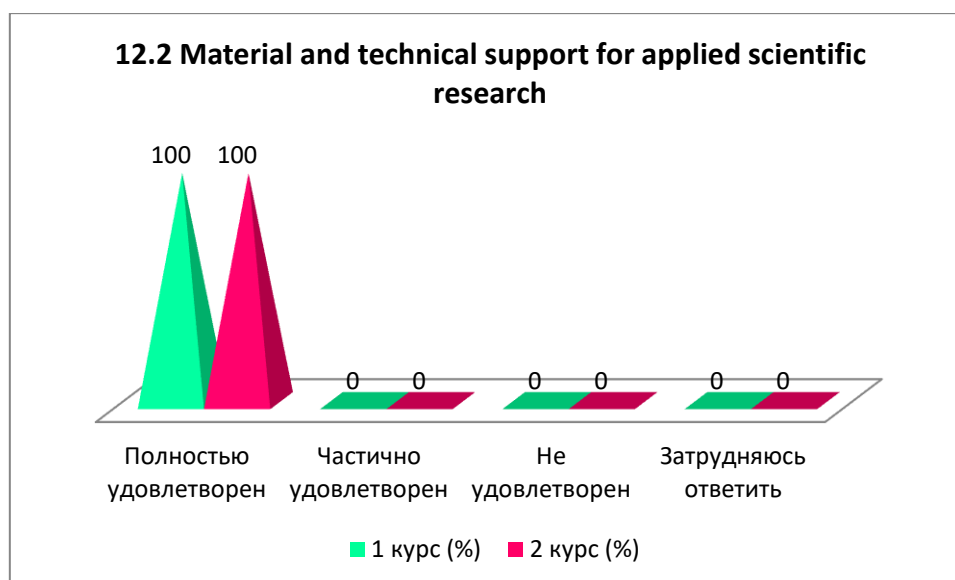
| Answer options | 1st year (%) | 2nd year (%) |
|----------------------|--------------|--------------|
| Completely satisfied | 100 | 100 |
| Partially satisfied | - | - |

| | | |
|-------------------------------|---|---|
| Not satisfied | - | - |
| I find it difficult to answer | - | - |



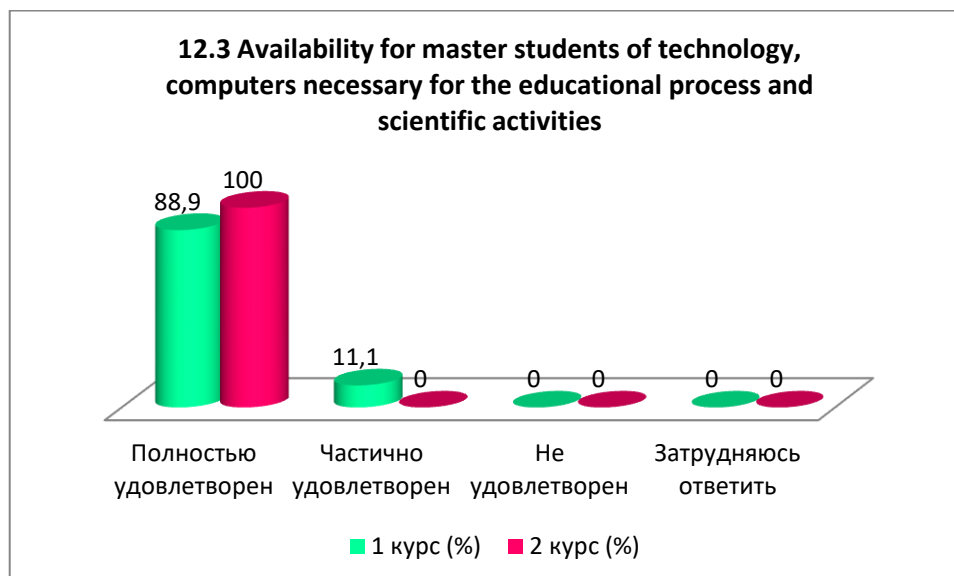
12.2 Material and technical support for applied scientific research

| Answer options | 1st year (%) | 2nd year (%) |
|-------------------------------|--------------|--------------|
| Completely satisfied | 100 | 100 |
| Partially satisfied | - | - |
| Not satisfied | - | - |
| I find it difficult to answer | - | - |



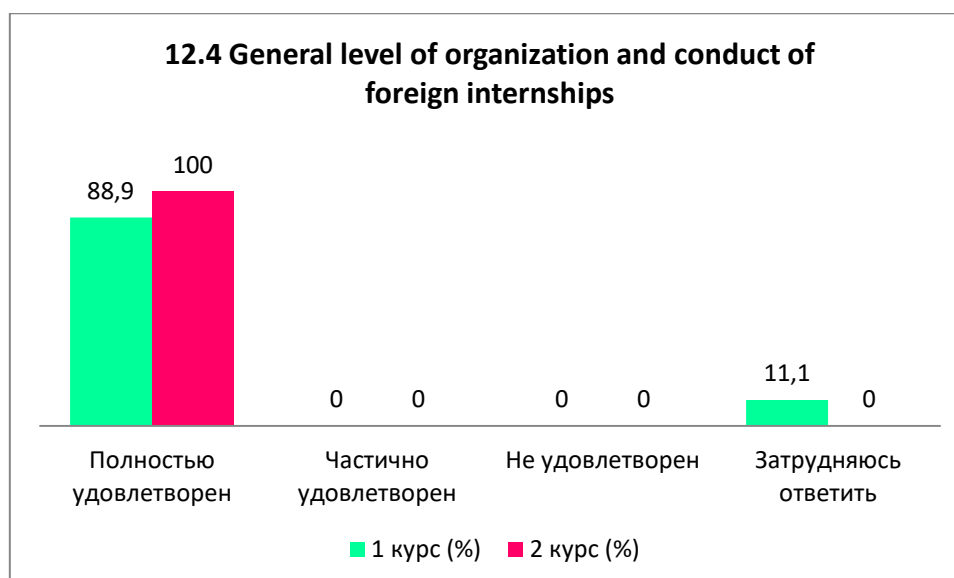
12.3 Availability for master students of technology, computers necessary for the educational process and scientific activities

| Answer options | 1st year (%) | 2nd year (%) |
|-------------------------------|--------------|--------------|
| Completely satisfied | 88,9 | 100 |
| Partially satisfied | 11,1 | - |
| Not satisfied | - | - |
| I find it difficult to answer | - | - |



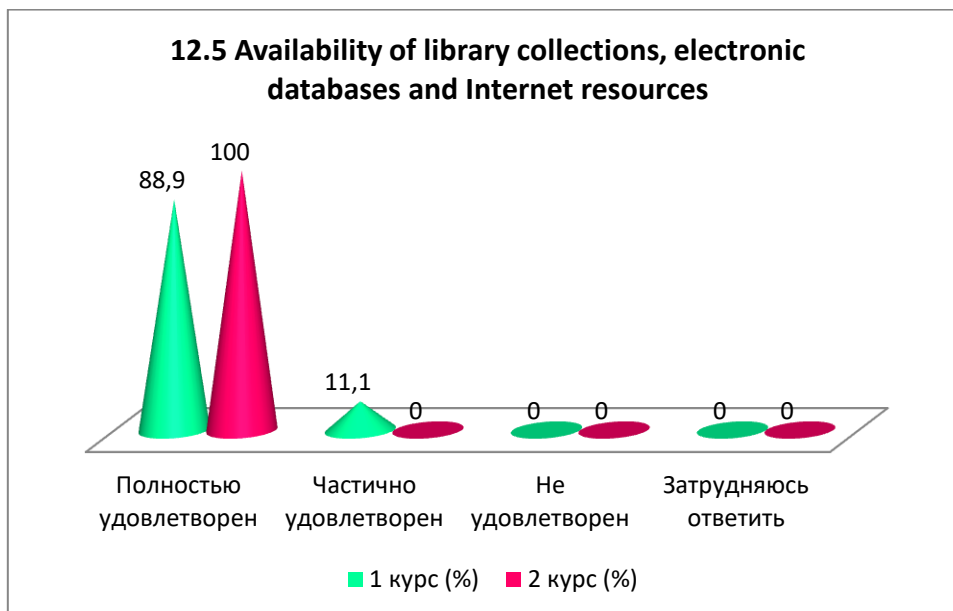
12.4 General level of organization and conduct of foreign internships

| Answer options | 1st year (%) | 2nd year (%) |
|-------------------------------|--------------|--------------|
| Completely satisfied | 88,9 | 100 |
| Partially satisfied | - | - |
| Not satisfied | - | - |
| I find it difficult to answer | 11,1 | - |



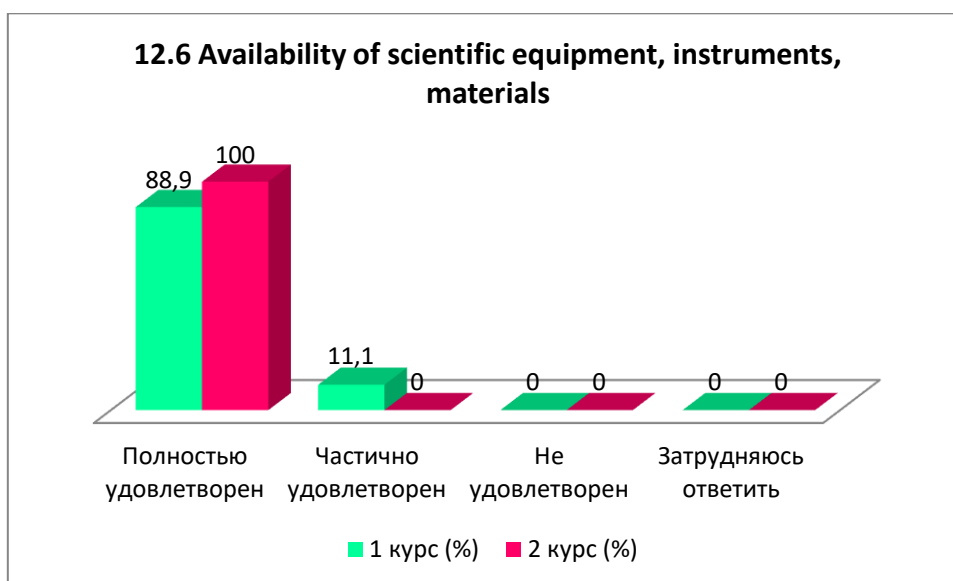
12.5 Availability of library collections, electronic databases and Internet resources

| Answer options | 1st year (%) | 2nd year (%) |
|-------------------------------|--------------|--------------|
| Completely satisfied | 88,9 | 100 |
| Partially satisfied | 11,1 | - |
| Not satisfied | - | - |
| I find it difficult to answer | - | - |



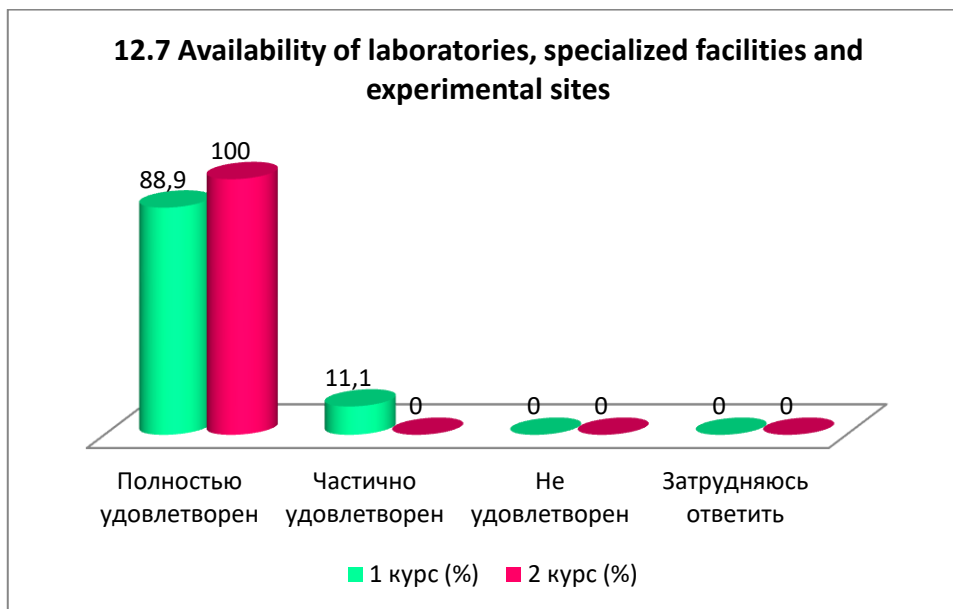
12.6 Availability of scientific equipment, instruments, materials

| Answer options | 1st year (%) | 2nd year (%) |
|-------------------------------|--------------|--------------|
| Completely satisfied | 88,9 | 100 |
| Partially satisfied | 11,1 | - |
| Not satisfied | - | - |
| I find it difficult to answer | - | - |



12.7 Availability of laboratories, specialized facilities and experimental sites

| Answer options | 1st year (%) | 2nd year (%) |
|-------------------------------|--------------|--------------|
| Completely satisfied | 88,9 | 100 |
| Partially satisfied | 11,1 | - |
| Not satisfied | - | - |
| I find it difficult to answer | - | - |

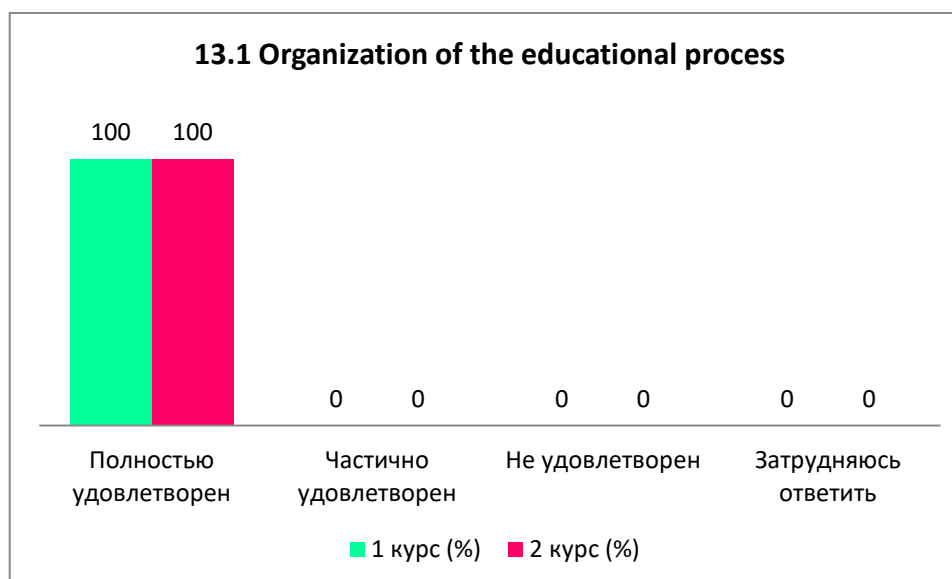


13. Are you satisfied?

| |
|--|
| 13.1 Organization of the educational process |
| 13.2 Living conditions in the dormitory |
| 13.3 Organization of free time |
| 13.4 Organisation of catering |
| 13.5 Organization of industrial practice |

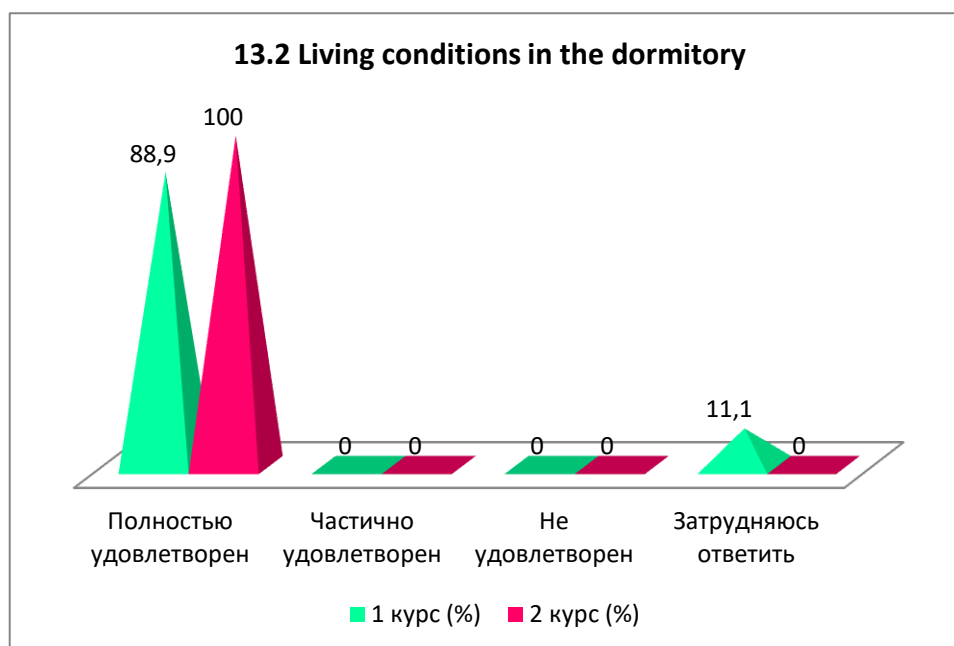
13.1 Organization of the educational process

| Answer options | 1st year (%) | 2nd year (%) |
|-------------------------------|--------------|--------------|
| Completely satisfied | 100 | 100 |
| Partially satisfied | - | - |
| Not satisfied | - | - |
| I find it difficult to answer | - | - |



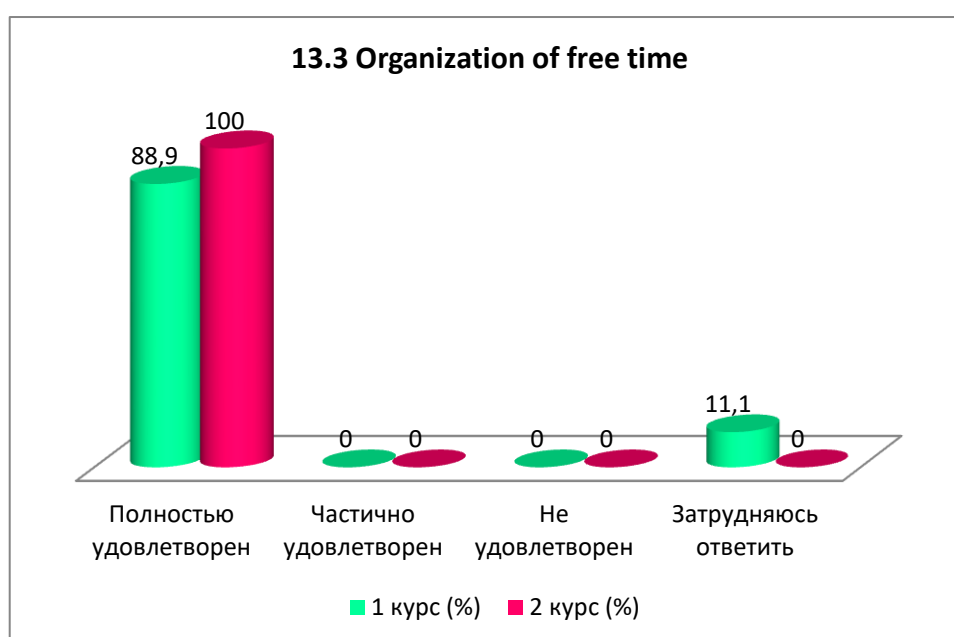
13.2 Living conditions in the dormitory

| Answer options | 1st year (%) | 2nd year (%) |
|-------------------------------|--------------|--------------|
| Completely satisfied | 88,9 | 100 |
| Partially satisfied | - | - |
| Not satisfied | - | - |
| I find it difficult to answer | 11,1 | - |



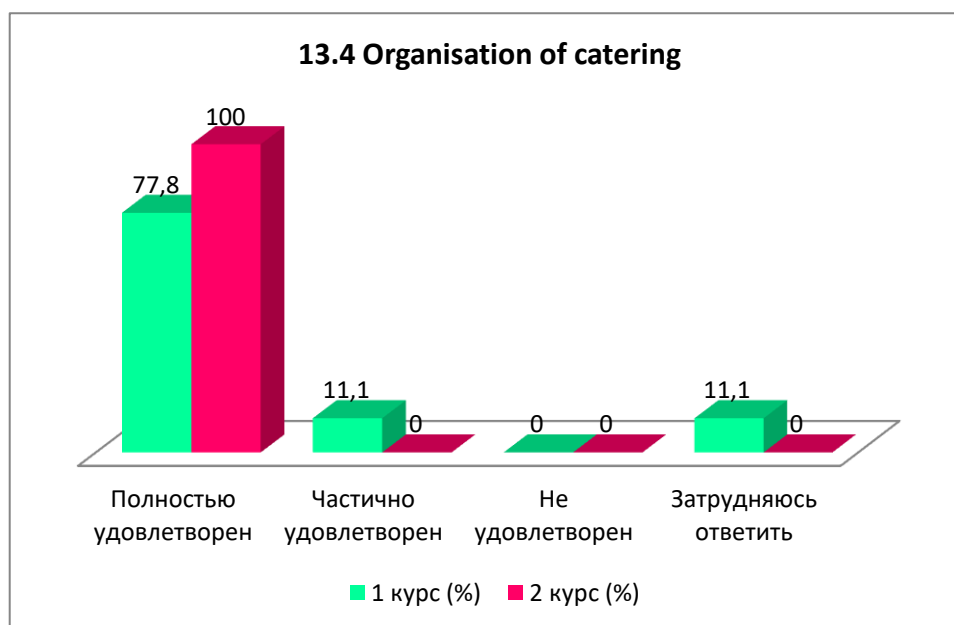
13.3 Organization of free time

| Answer options | 1st year (%) | 2nd year (%) |
|-------------------------------|--------------|--------------|
| Completely satisfied | 88,9 | 100 |
| Partially satisfied | - | - |
| Not satisfied | - | - |
| I find it difficult to answer | 11,1 | - |



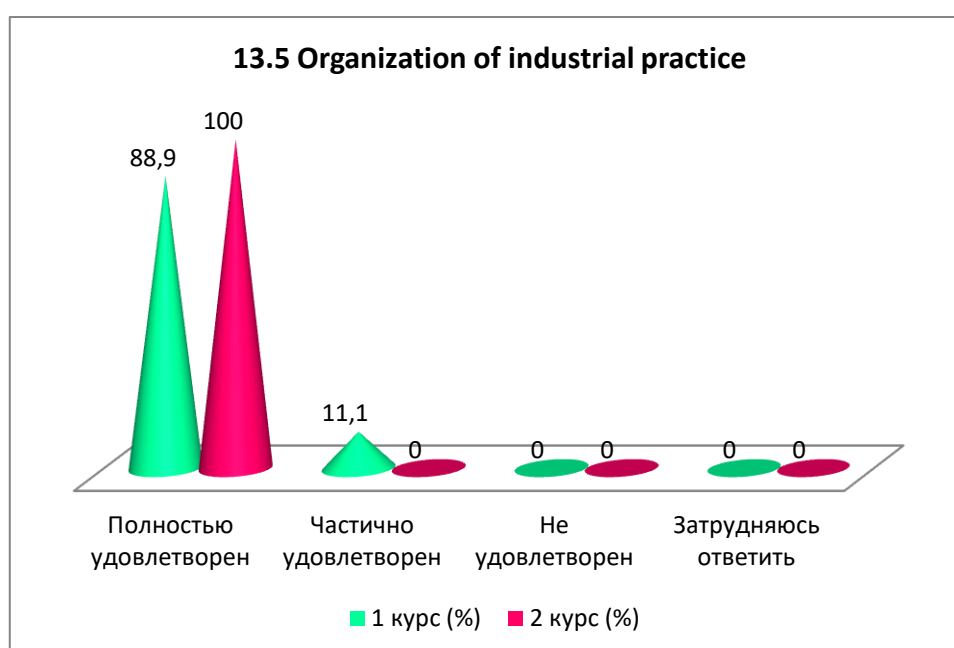
13.4 Organisation of catering

| Answer options | 1st year (%) | 2nd year (%) |
|-------------------------------|--------------|--------------|
| Completely satisfied | 77,8 | 100 |
| Partially satisfied | 11,1 | - |
| Not satisfied | - | - |
| I find it difficult to answer | 11,1 | - |



13.5 Organization of industrial practice

| Answer options | 1st year (%) | 2nd year (%) |
|-------------------------------|--------------|--------------|
| Completely satisfied | 88,9 | 100 |
| Partially satisfied | 11,1 | - |
| Not satisfied | - | - |
| I find it difficult to answer | - | - |



The following **conclusions** can be drawn from the results of the questionnaire:

The main factors influencing the choice of a Master's programme at a university include leading scientists in the teaching staff (32.6%), high quality of education (23.8%), proximity to the place of family residence and continuation of studies at the previous university (18.3%). Additionally, it is worth noting that a wide choice of specialities, prestige of the university, acceptable cost of education and the possibility of employment with a university diploma also play a significant role in choosing a master's degree at the university.

The level of Master students' satisfaction with the availability of information on various aspects of their studies is very high (100%). This indicates that all Master students feel well informed about their study programme, professional activities, competences, internship opportunities and their supervisors.

The teaching staff is evaluated by master students as follows:

- knowledge and qualification of teachers were evaluated by 100%;
- pedagogical qualities of the teachers received the maximum assessment (100%);
- objectivity and impartiality of evaluations are highly evaluated, 94,4% of master students expressed satisfaction with this indicator;
- teaching methods used by teachers are satisfactory for all (100%) undergraduates.

Participation of master's students in the formation of an individual work plan:

- 31% of master's students actively participate in the development of their work plan under the supervision of the supervisor, which indicates the independence and responsibility of master's students;
- 25,4% of master's students form the plan independently, and the supervisor signs it without significant influence;
- 30.9% of master's students see their participation as formal, as they relied more on the supervisor's help due to difficulties in formulating ideas independently;
- 12.7% of master's students do not participate at all, however, self-critically assessing their efforts, they believe that they could not have coped without the main help of the supervisor.

Master students are 100% satisfied with the assistance of their supervisor in writing their thesis, which indicates a high degree of satisfaction and successful co-operation between master students and supervisors in the learning process.

Indicators of high scientific level of the university include the following:

1. Involvement in research projects: 43,7%.
2. Strong teaching staff: 36.5%.
3. Participation in targeted programmes of socio-economic development: 25.4%.
4. Presence of publications of university staff in international editions: 18,3%.
5. The work of famous foreign scientists: 12.7%.
6. Modern material and technical base: 11.1%.

As for the participation of Master students in research projects and scientific life of the university, 56.4% of Master students actively participate in research projects and attend scientific events such as seminars and conferences. These data show that more than half of the Master students are involved in research activities that contribute to their academic and professional development.

During the whole period of their activity 54.8% of Master's students published their theses and articles both in Kazakhstani and foreign editions. This indicates an average degree of involvement of undergraduates in the scientific community and their desire to disseminate the results of their research at the international level.

The University successfully organises the educational process, ensuring a high degree of satisfaction of master's students with the conditions of accommodation, free time, meals and

industrial practice. This contributes to the creation of a favourable educational environment and positively affects the reputation of the institution.

In general, Master's students appreciate the research and learning opportunities provided by the university, which is reflected in Master's student satisfaction.

Recommendations:

The Head of the Department should familiarise and discuss the results of the questionnaire with the staff and Master students. If necessary, develop an action plan to improve the quality of educational services.

Master students can request the results of the questionnaire by emailing the Center of Quality Management and Accreditation cqma_kstu@mail.ru.